

Exhibit D

BOROUGH-BASED JAILS

MANHATTAN DETENTION COMPLEX

ARTWORK CONSERVATION PLAN

APRIL 11, 2022



MANHATTAN DETENTION COMPLEX (MDC)



MANHATTAN DETENTION COMPLEX



CENTRE ST AND WHITE ST



BAXTER ST AND WHITE ST



VIEW FROM CENTRE ST LOOKING SOUTH-EAST



VIEW FROM BAXTER ST LOOKING SOUTH

MDC ARTWORK LOCATIONS

Kit-Yin Snyder Artworks

Justice (1992)

Solomon's Throne
Sculpture on roof of pedestrian bridge

Pavement Design (Upright)
Paving pattern on White St.

The Seven Columns of the Temple of Wisdom
Seven sculptures on terrace and sidewalk

Snyder artwork plaque

Haas artwork plaque



Richard Haas Artworks

Immigration on the Lower East Side of New York (1989-1997)

Seven painted mural panels on second story of building exterior

The Judgements of Solomon and Pao Kung (1989)

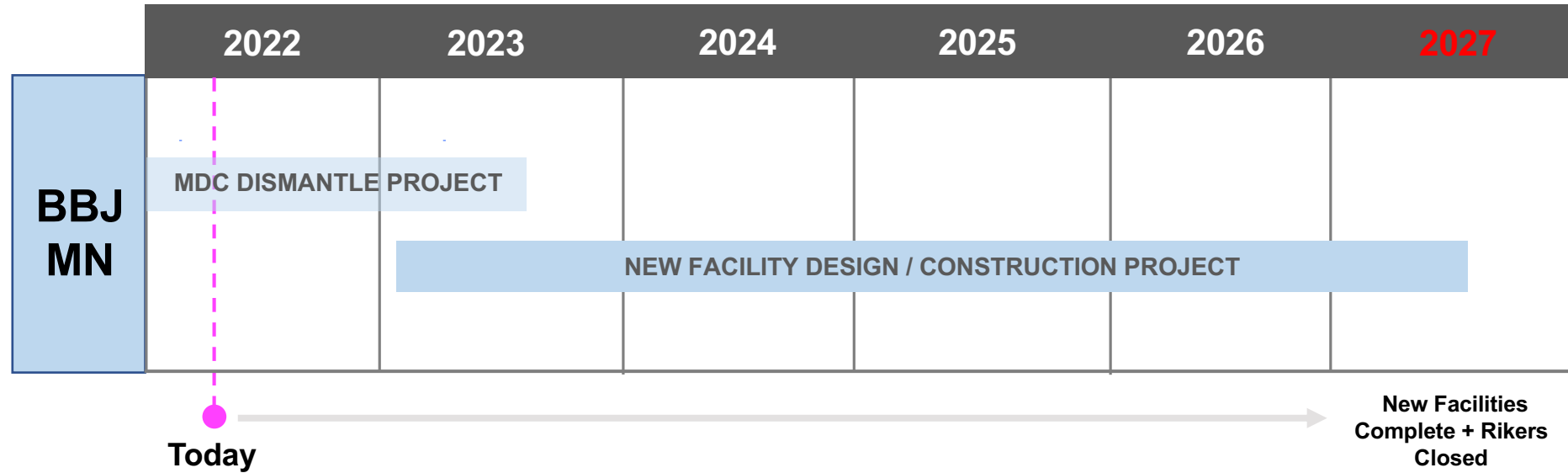
Four cast cement relief medallions at exterior corners of pedestrian bridge

Rene Chambellan Artworks

Enlightenment (c.1940)
Cast bronze relief panel

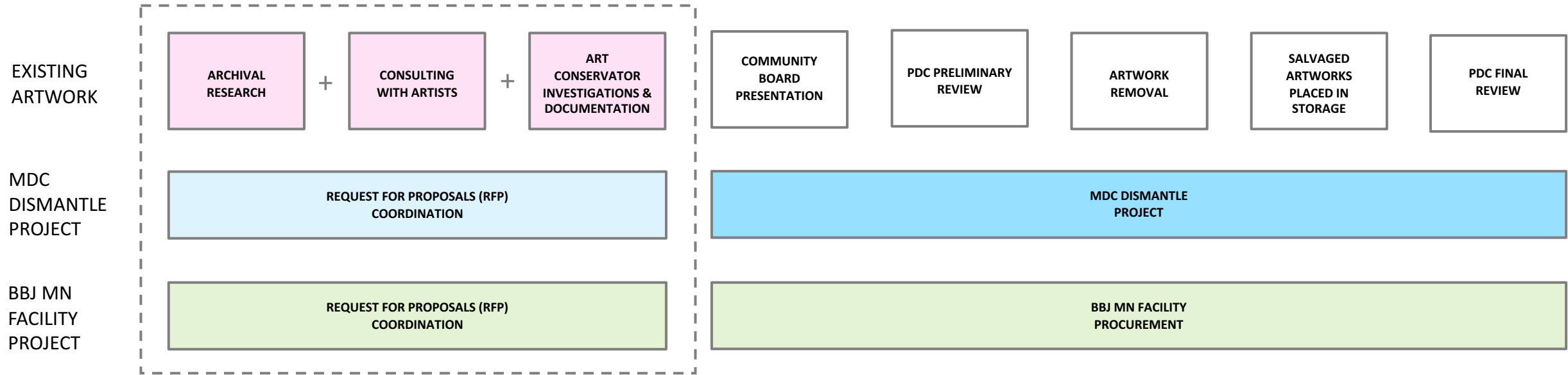
Arms of the City of New York (c.1940)
Cast bronze relief panel

BBJ MANHATTAN ANTICIPATED SCHEDULE

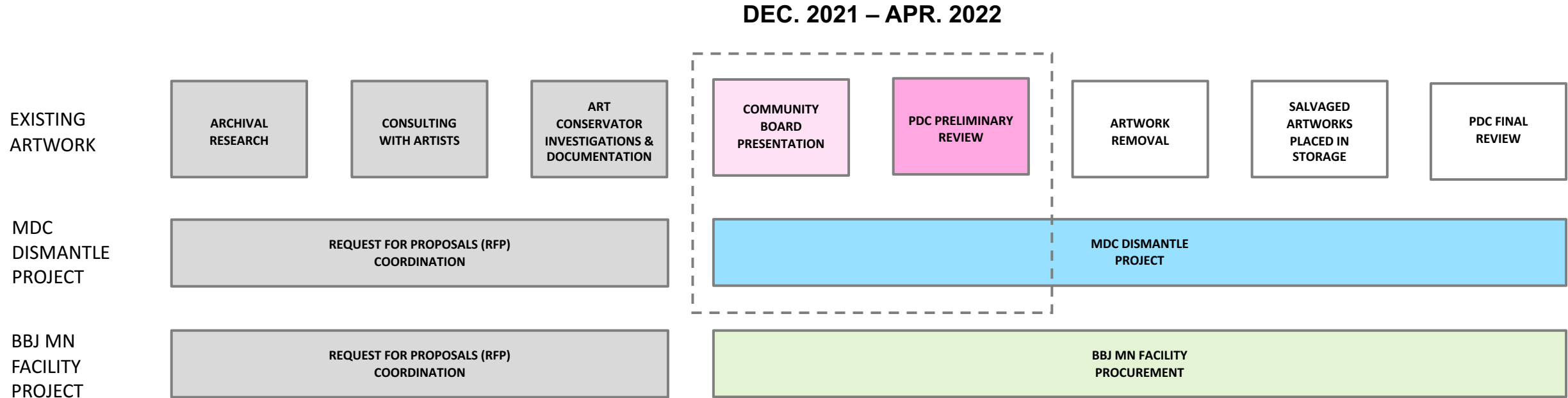


EXISTING ARTWORK REMOVAL PLANNING & REVIEW PROCESS

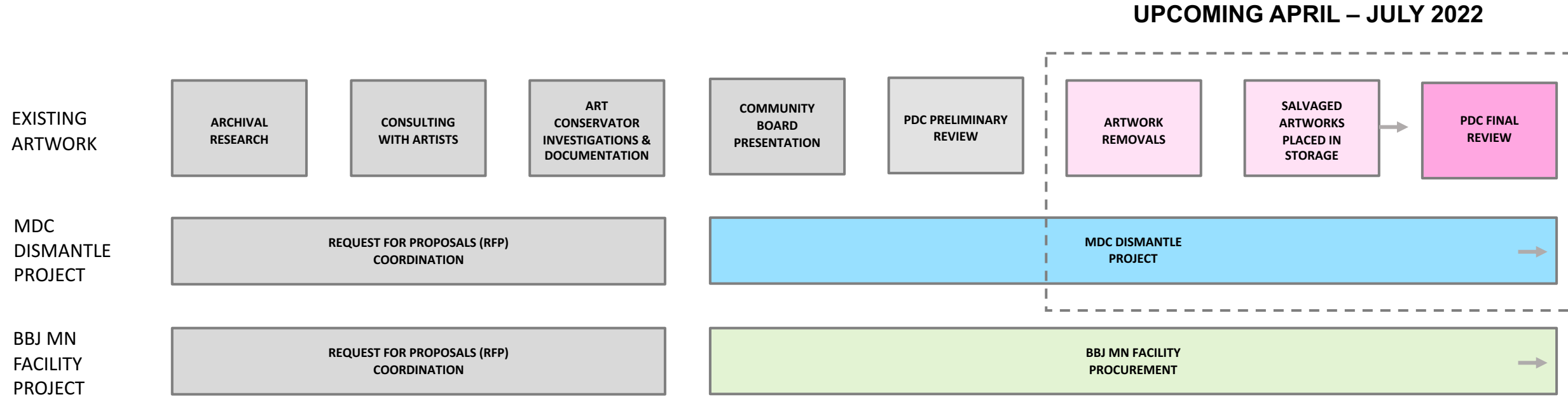
WORK COMPLETED JAN. 2019 - DEC. 2021



EXISTING ARTWORK REMOVAL PLANNING & REVIEW PROCESS



EXISTING ARTWORK REMOVAL PLANNING & REVIEW PROCESS

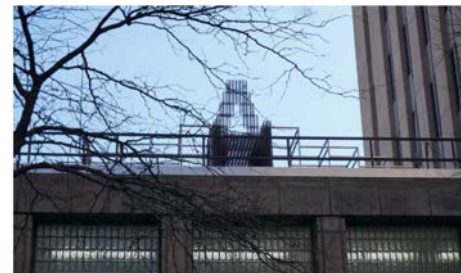


APPROVED PLAN FOR ARTWORKS THAT CAN BE SALVAGED

1. Document existing installation
2. Carefully remove artworks and store in custom crates during dismantle of existing MDC buildings and design of new BBJ MN Facility
3. Re-install salvaged artworks, at the new BBJ MN Facility or at an alternative site, in consultation with artist



ENLIGHTENMENT



SOLOMON'S THRONE



ARMS OF THE CITY OF NEW YORK



THE SEVEN COLUMNS OF THE TEMPLE OF WISDOM



THE JUDGEMENTS OF SOLOMON AND PAO KUNG

PROPOSED PLAN FOR ARTWORKS THAT CANNOT BE SALVAGED

1. Document existing installation
2. Store representative samples of original materials for reference
3. Recreate artworks in new materials, at the new BBJ MN Facility or at an alternative site, in consultation with artist



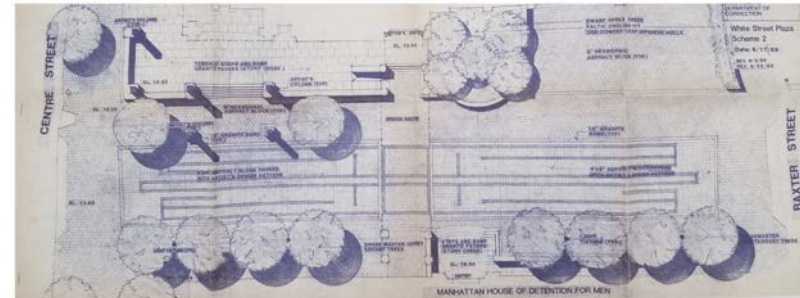
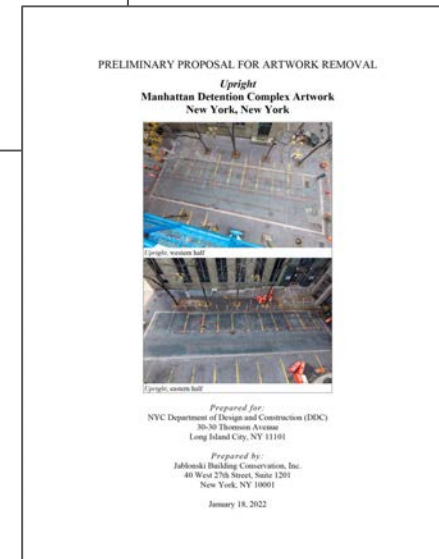
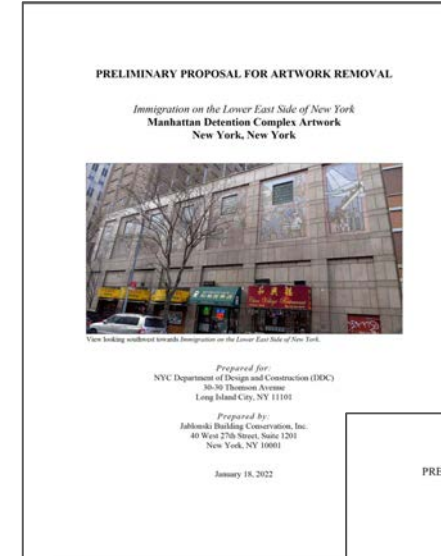
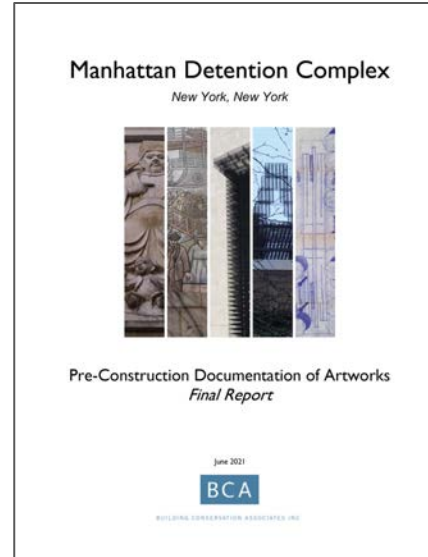
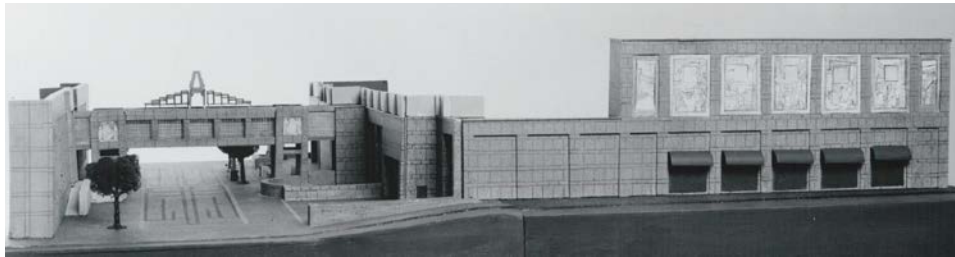
IMMIGRATION ON THE LOWER EAST SIDE OF NEW YORK



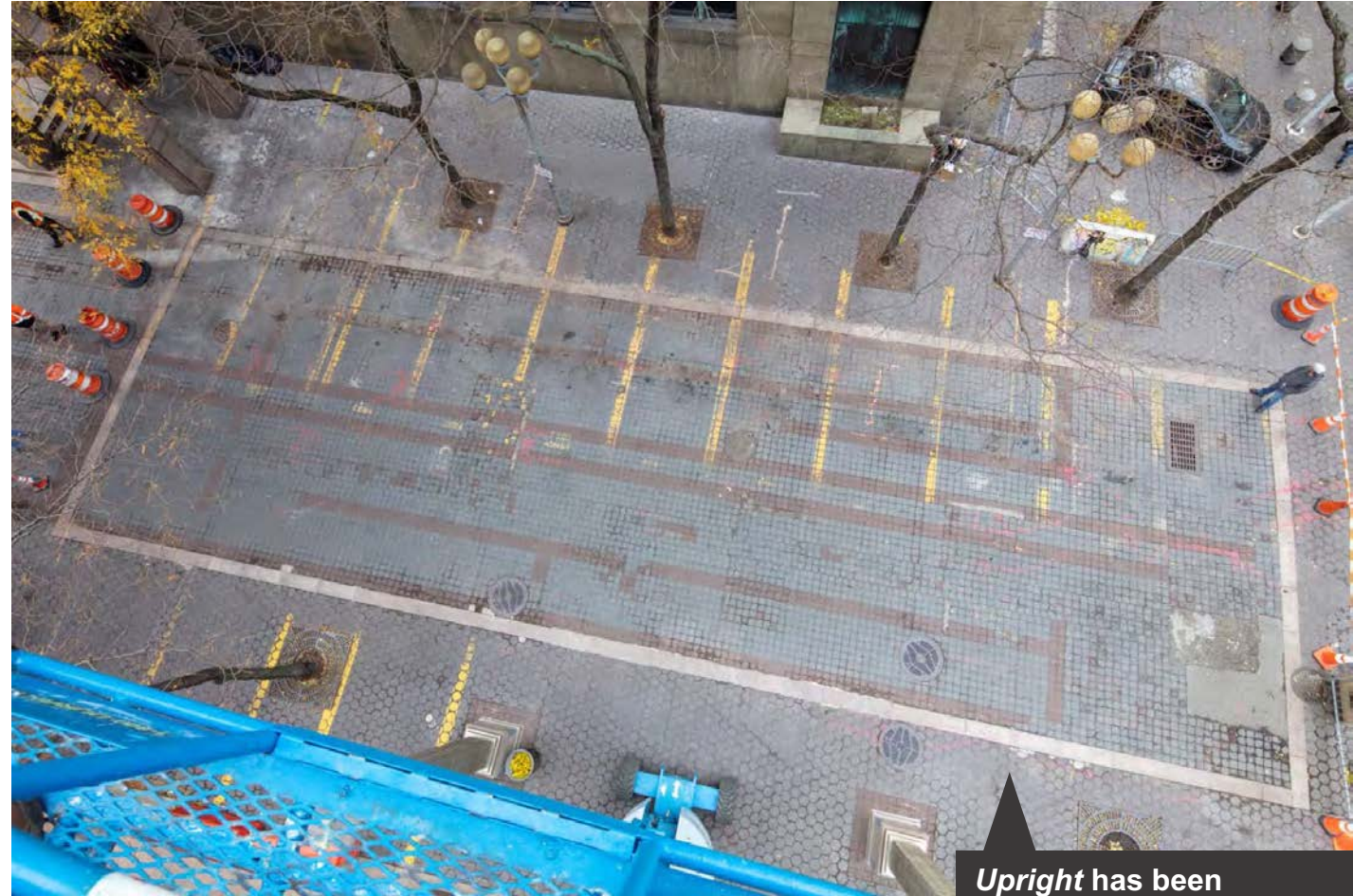
PAVEMENT DESIGN (UPRIGHT)

DOCUMENTATION OF EXISTING INSTALLATIONS INCLUDES:

- Researching and assembling artwork information
- Consulting with artists and recording their statements
- Photographing artworks in situ
- Commissioning professional reports
- Confirming as-built conditions against original design drawings
- Creating electronic copies of original designs and drawings
- Archiving documentation materials



ARTWORK DOCUMENTATION



Upright has been professionally photographed from above and at ground level

ARTWORK DOCUMENTATION



KIT-YIN SNYDER PLAQUE

The original plaque will be salvaged and stored

ARTWORK DOCUMENTATION



Additional photographs of the mural will be taken once obstructions are removed

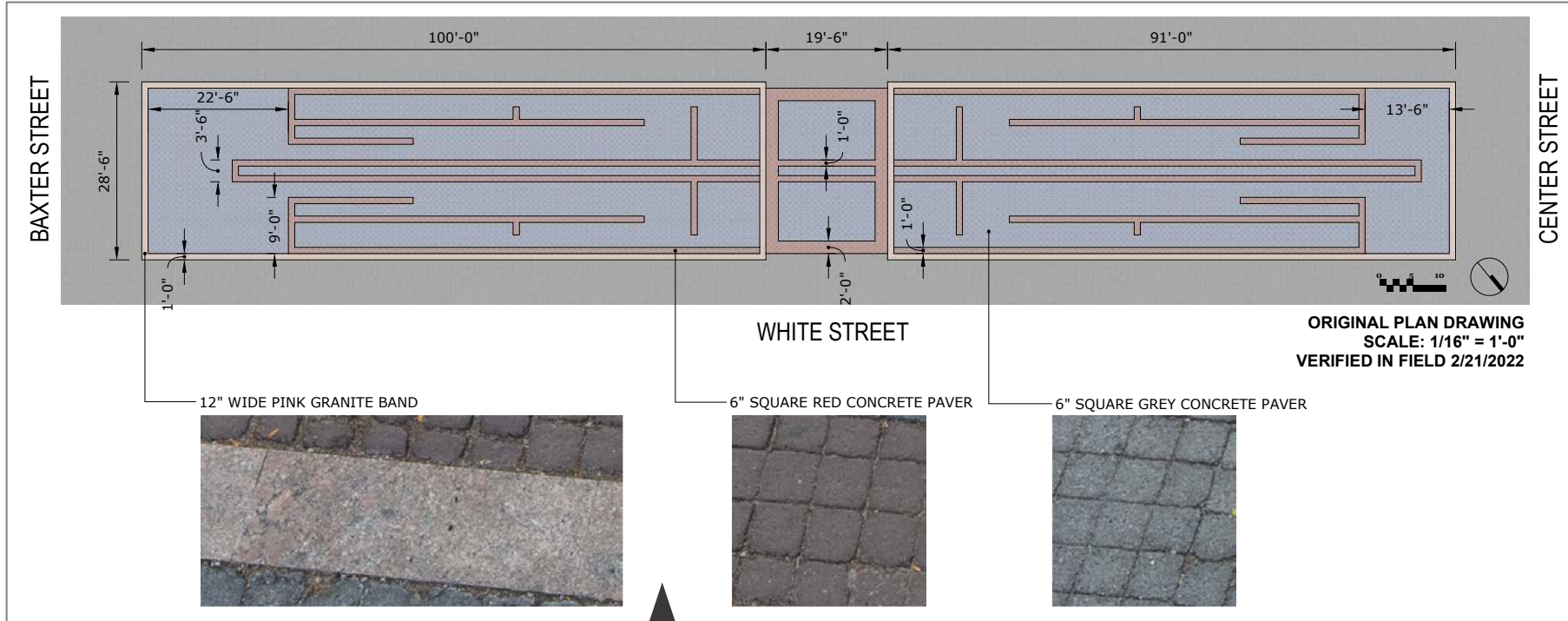
ARTWORK DOCUMENTATION



RICHARD HAAS PLAQUE

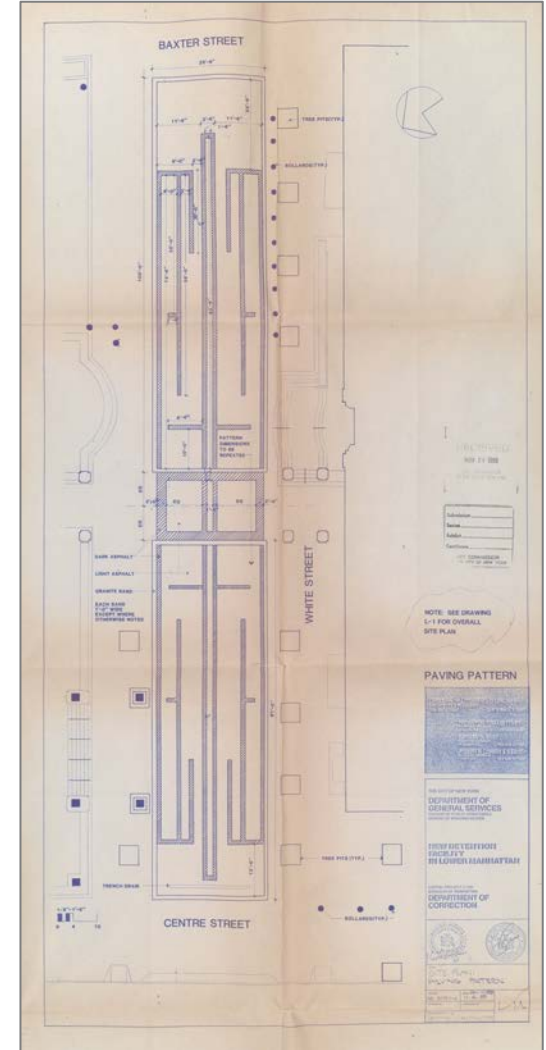
The original plaque will be salvaged and stored

ARTWORK DOCUMENTATION



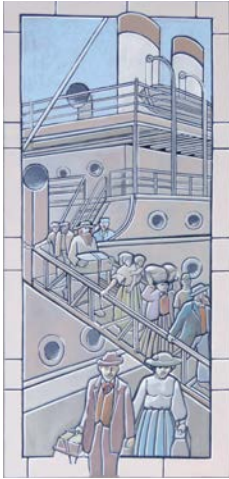
The original design drawing has been verified against as-built conditions. A new CAD drawing has been created with additional dimensions detailed

AS-BUILT DRAWING, 2022



ORIGINAL DRAWING, 1988

ARTWORK DOCUMENTATION



ORIGINAL MAQUETTES

The artist's original maquettes for the mural have been professional photographed and scanned at high resolution (2400 dpi)

MATERIAL SAMPLE SALVAGE

6" SQUARE RED
ASPHALT PAVERS

6" SQUARE BLACK
ASPHALT PAVERS

12" WIDE PINK
GRANITE BAND



Samples of each material used in the existing installation will be salvaged and stored for future reference

MATERIAL SAMPLE SALVAGE

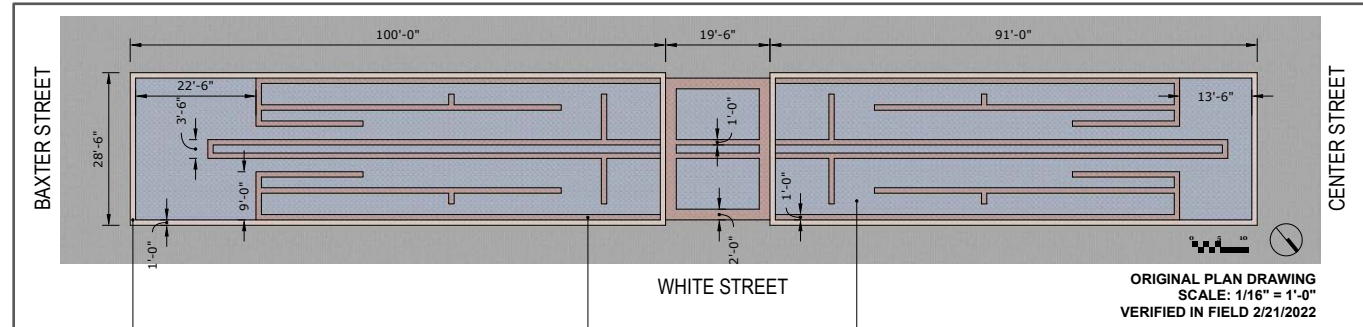


PANEL 6 WAS PAINTED IN 1997.
OTHER PANELS WERE PAINTED
IN 1989

At least one sample from Panel 6 and one sample from another panel will be salvaged and stored for future reference. An additional sample will be salvaged for the artist's own collection, per his request

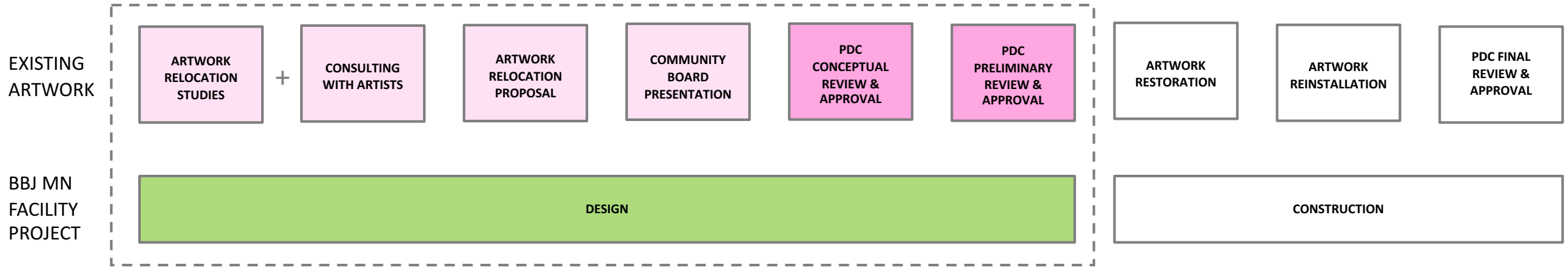
PLAN FOR REPRODUCING ARTWORKS

- Plan to recreate artworks, at the new BBJ MN Facility or an alternative location, in consultation with artist
- Selected Design-Builder for BBJ MN Facility will study and propose placement options to recreate artworks. May propose to modify scale and/or materials of recreated artworks to integrate with new context if approved by artists
- Design team will consult with artists regarding the treatment, display, siting, and installation of their artworks throughout the course of the BBJ MN Facility project
- Design services and site preparation for the installation or recreation of artworks will be provided by Design-Builder
- PDC review and approval required

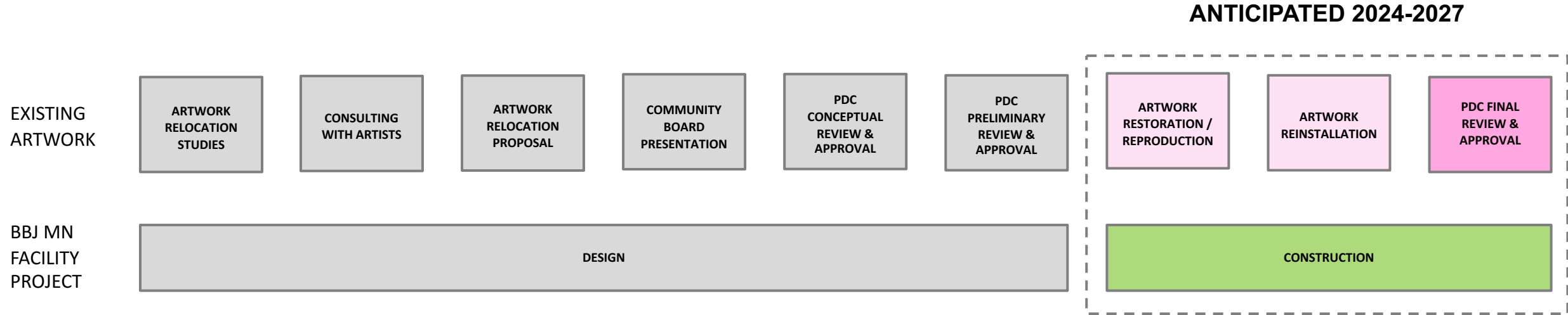


EXISTING ARTWORK RELOCATION & REPRODUCTION PLANNING & REVIEW PROCESS

ANTICIPATED 2023-2024



EXISTING ARTWORK RELOCATION & REPRODUCTION PLANNING & REVIEW PROCESS



THANK YOU